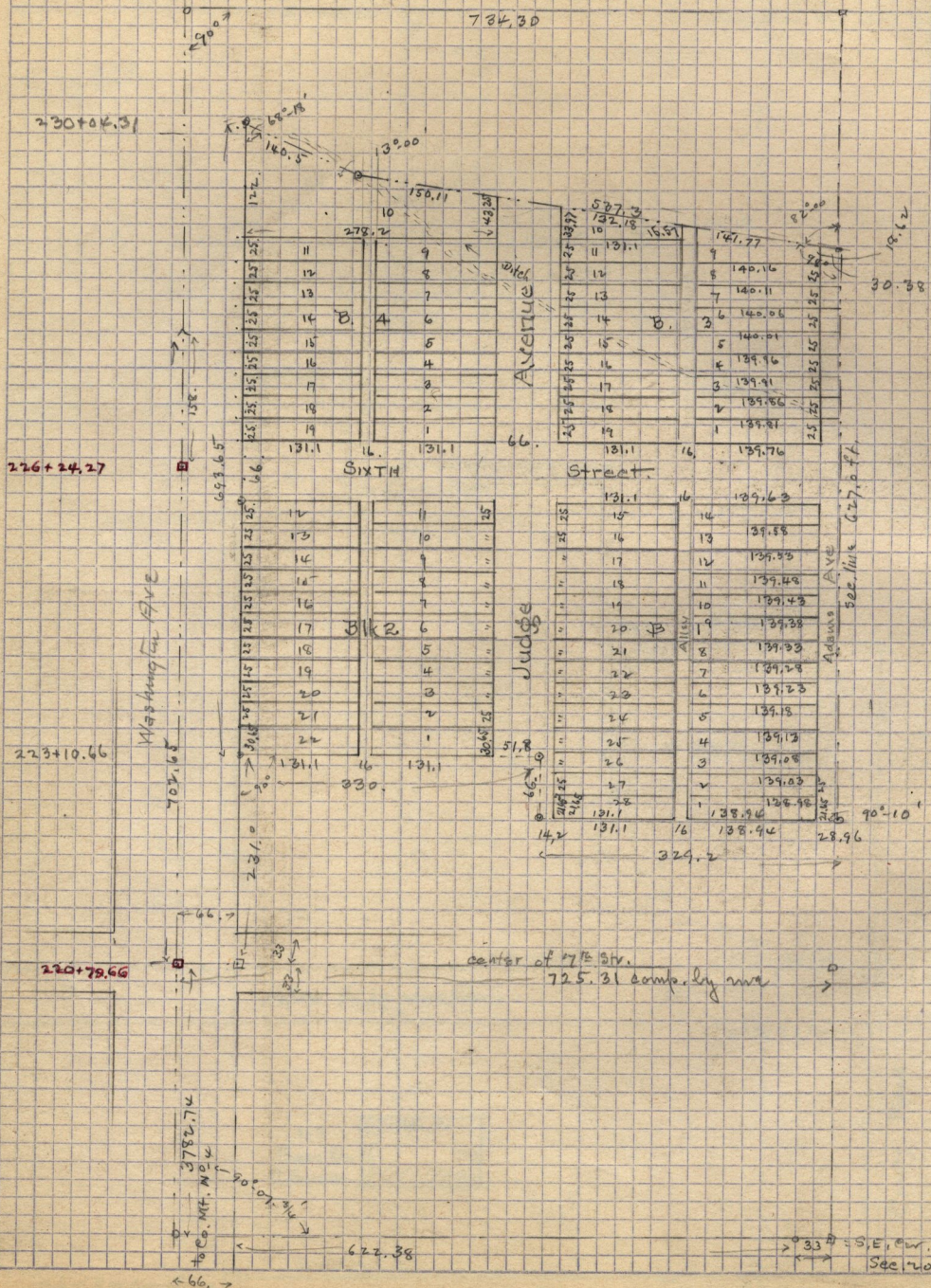


F.W. Redfield Lots 1-6-7-8-9-10-11-12-13-14-15-16
Monterey Add. to Oakland City.

Plat of Monterey Add

See also page 89 for Survey of Redfield



Description of land embraced in Monterey Add. Began at E. line Washington Ave. 1570.4 ft N. of S. line Sec. 17 T. 1. N. R. 1. W. Thence S. 71° 11' E. 330.0 ft South at R. A. 66.6 ft. E. of R. A. 329.2 ft. E. line of Sec. 17 Thence S. along Sec. 17 132.00 dist 140.5 ft. Thence deflected W. 72° 00' dist 537.7 ft. Thence S. along E. line of Sec. 17 643.65 ft. to beg.

> 33 = S. E. cor. N. E. 1/4
See 120.71 G. N. - R. 1. W.